

# NOPNA News

nopna.org

North of Panhandle Neighborhood Association

2016 : issue 3



## Survey Shows Strong Support for Fell and Oak Protected Bike Lane

by Tim Hickey

PHOTO: San Francisco Bicycle Coalition/Flickr

In our last posting regarding the Fell and Oak Protected Bike Survey, we, the Board of the North of Panhandle Neighborhood Association (NOPNA,) wanted to get your input about the proposal to install a dedicated bike lane along the Panhandle Park.

This proposed bike lane would be protected by parked cars and a painted buffer with pedestrian islands from Baker Street to Shrader Street. If approved, installation of the bike lane will reconfigure Oak and Fell from four to three lanes, identical to the same streets east of Baker Street. After two months of gathering input, 700+ responses came back with more than 70% of the respondents supporting a protected bike lane, and 27% preferring the current road configuration. This strong support will be very helpful in showing city officials and leaders that there is a demand for this street improvement.

A feasibility study will be undertaken by the SFMTA to determine preliminary cost estimates and engineering

challenges. NOPNA will also have stakeholder meetings with various park users to identify concerns and ensure that the early issues are addressed before larger community meetings occur. Funding sources will also have to be identified and pursued from the many potential sources. Fortunately for our purposes, this corridor is a high injury area for all modes, so various funds may be available.

Please check our site, [NOPNA.org](http://NOPNA.org), for detailed survey results with preferences by park user type, and email [board@nopna.org](mailto:board@nopna.org) if you would like to participate in the stakeholder meeting. Please indicate your connection and use of the park.

## FROM THE BOARD

Neighbors, we are in the middle of an election year where there has been a lot of talk again about how citizens' voices aren't heard, and/or citizens feel they aren't represented. I'm sure it can feel like that on the federal level, but on the local level, getting involved with your local neighborhood association is one sure way of making a difference.

As you might have read in the last issue, NOPNA has been a recognized Neighborhood Association for 25 years. In the past quarter of a century, we have worked side-by-side with other neighborhood associations, city agencies and San Francisco City Hall to make a difference in our little section of the city. NOPNA often leads the charge in advocating for local infrastructure improvements, such as the bicycle lanes on Fell and Oak, Panhandle Park and Playground improvements, and the coming traffic and safety upgrades to Masonic. We work with SFPD Park Station and City Hall when our neighbors feel their safety is at risk. We look out for our neighbors with fundraisers when disaster strikes and we also organize community-building events, such as the annual Block Party, Halloween trick-or-treating and costume contest, and end of year Holiday Party.

None of this is accomplished without the direction of our neighbors (you!) and the leadership of the NOPNA Board. Our board members are NoPa residents who want to make a difference in the neighborhood in which they reside. The board consists of renters, homeowners and also merchants, each with a diverse background. Each board member has their own reason for joining, and while some stay on the board for many years, others contribute for one or two years. We are currently looking for neighbors who are interested in making a difference and joining the NOPNA Board. We are specifically recruiting residents who are interested in writing, editing and communications, as well as those focused on crime and safety issues, and working with SFPD/Park Station.

If you would like to get more involved and voice your ideas for our neighborhood, we ask that you contact us by sending us an email to: [board@nopna.org](mailto:board@nopna.org) or speaking with one of the board members at our bimonthly meetings. Our next General Meeting is Thursday, September 15th at 7 p.m.

We look forward to hearing from you!

J.J. Strahle  
is a member  
of the NOPNA  
board.



## NOPNANews

The NOPNA News is published by the North of Panhandle Neighborhood Association for the residents, businesses, and friends of our neighborhood, which is bounded by Masonic Avenue and Turk, Divisadero and Fell Streets.

**PUBLISHER**

NOPNA Board of Directors

**MANAGING EDITOR**

Mimi Sparrow

**PRODUCTION EDITOR**

Mimi Sparrow

**GRAPHIC DESIGNER**

Lisa Eastlack

**DISTRIBUTION**

Will Valentine

**PRINTING**

Image Printing, San Francisco

NOPNA's mission: The purpose of this association shall be to establish neighborhood unity, maintain multi-ethnic and multi-cultural diversity, foster a sense of neighborhood pride, promote a safe and clean community, and improve the quality of life for all residents of the neighborhood.

Contact NOPNA by email:  
[board@nopna.org](mailto:board@nopna.org)  
[www.nopna.org](http://www.nopna.org)

Get The News?—Pay Your Dues! Your NOPNA membership gives us a stronger voice at City Hall and supports our efforts to create a clean, safe, and friendly neighborhood.

Please join us! You can sign up online at [nopna.org](http://nopna.org).

## LOOKING FOR AWESOME PEOPLE TO JOIN NOPNA NEWS

Join our team of volunteer writers, photographers and designers or help us with distribution.

If you're interested, please email  
[board@nopna.org](mailto:board@nopna.org)

# Harding Theater Sets New Target Date

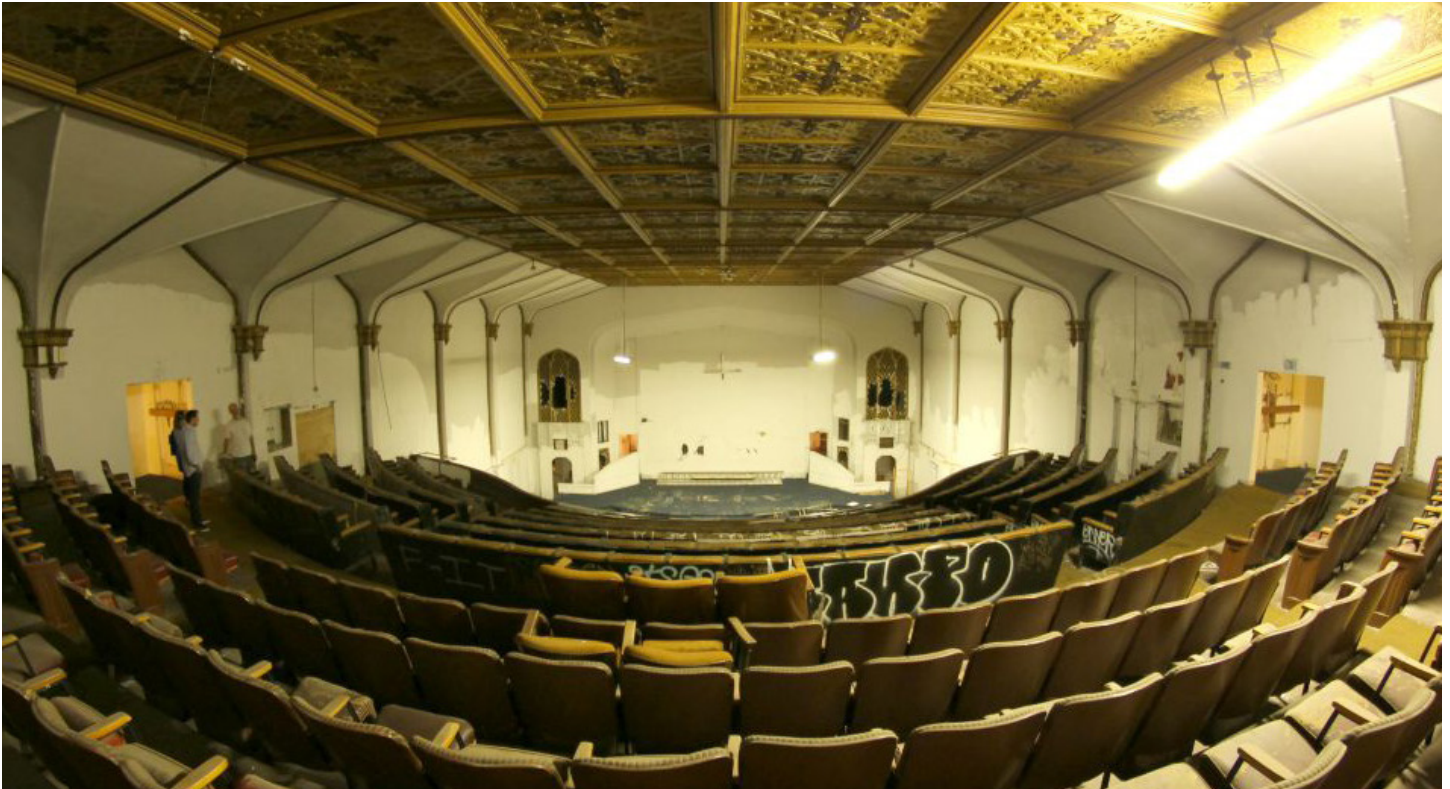


PHOTO: Bryce Bishari/Hoodline

Last year, we learned the Harding Theater on Divisadero would get new life as an arcade-themed bar called “The Emporium,” thanks to Chicago-based entrepreneurs Danny and Doug Marks. Compared with the other proposals that had been floated for the theater, (condominium-ization; conversion to a communal art space,) this proposal was different in that it both preserved the historic theater, was economically viable, and took advantage of the unique interior space. This popular and creative idea quickly gained strong neighborhood support. Plans for the space moved efficiently through the planning process and were approved last November. At the time, Danny Marks hopefully speculated they would be opening early in the summer of 2016.

Unfortunately, the warm reception has not shielded The Emporium from the inevitable delays that seem to beset all construction in San Francisco. The group has set a new target to open by the end of 2016, or early in 2017. As remodeling is closer to complete, they are considering

“soft-launch” events to enable neighborhood residents to get a new look at the space prior to a formal opening. Stay tuned for more news later this year.

Like their other ventures, The Emporium is conceived as a ‘21 and Over’ venue, and is permitted accordingly. It will sell alcohol, and, lacking a kitchen, will encourage patrons to bring in food of their own from local eateries. Understanding the importance of NOPA families with children, Danny Marks, who has a three year old of his own, is looking for ways to accommodate the ‘Under 21’ crowd within the bounds of the permits. He is considering opening in the afternoons as well as weekend mornings, though these plans are as of now a work in progress.

---

**Jason Cauthen** is a San Francisco native, has participated in the Bay to Breakers in each of the last four decades, and now loves sharing the event with his young children.

# Rejuvenation Continues in the Panhandle



PHOTO: Charles Dupigny

The Panhandle Park has seen its share of rejuvenation over the past several months, and not just in the plantings. The Baker Street end of the park is now more pedestrian-friendly. The stretch of sidewalk suffered from large areas of tripping hazards amongst the crumbling asphalt. In May, DPW replaced the park-side sidewalk with concrete. The whole block has been completely replaced with its recently upgraded corners, ramps, and crosswalks.

Despite overwhelming support from neighbors and Golden Gate Park staff, SF Recreation and Parks (SF

RPD) did not select The Panhandle Park application as a Community Opportunity Fund grant recipient. The proposal to add a new path and lighting around the McKinley Monument will still be sought by the neighborhood with a pledge of \$45,000 from NOPNA. The proposal builds upon the continuing efforts that make the Baker Street entrance more accessible, safe and inviting.

In the meantime, the Panhandle Pedestrian Safety Improvement Project continues. Phase 2 is nearing completion of design, which will be followed by bid and construct efforts

this summer. New path signage and amenities will offer information and comfort to park visitors. Phase 3 path re-paving is still not funded, but a key coordination piece has recently been designed. The irrigation system of the park is antiquated and in need of replacement. SF RPD recently completed a study and design of the new system with a \$1.5M cost estimate. With this and the repaving cost, RPD can seek the approximate \$3.5M needed in total.

In other Panhandle Park news, a new playground is fully funded, but yet to be assigned a Project Manager. NOPNA continues to request commencement of this work from RPD. Also, SFMTA has announced \$705,000 in its 2017-18 budget for Panhandle Path improvements. This includes reviewing the Phase 2 signage, and improving circulation in and out of the park, especially at Shrader, Baker and Stanyan Streets.

---

Dera-Jill Pozner is a member of the NOPNA board.



## **Law Offices of Daniel J. O'Connell**

415-272-3811

[www.djolawoffice.com](http://www.djolawoffice.com)

Landlord/Tenant \* Employment \* Personal Injury  
*Right around the corner and ready to help.*



“A jury consists of twelve persons chosen to decide who has the better lawyer.” – Robert Frost

*Take your next step,*

OWN A  
LITTLE  
PIECE  
OF  
NOPA



Whether you are looking to downsize or relocate, consider NOPA for your next move. NOPA provides the perfect environment every new or continuing homeowner is looking for. Take it from Bonnie, who has been living in NOPA for over 25 years. Bonnie is a master at assisting clients in taking that next step, for every stage of life. *Much more than just a Realtor, SHE'S A MENTOR.*



Bonnie Spindler

THE  
VICTORIAN SPECIALIST

BonnieSpindler.com



**Bonnie Spindler**

All Time Top Residential  
Sales Agent at Zephyr Real Estate

415.474.4445

properties@bonniespindler.com

www.bonniespindler.com

LIC# 01175723



ZEPHYR  
REAL ESTATE

# Is Bay to Breakers Getting Better with Age?

A beautiful San Francisco morning welcomed tens of thousands of revelers and runners as well as spectators who turned out both to watch the feats of athleticism and join in the festive spirit. One reveler expressed the spirit as “San Francisco’s best day...when a wide cross-section of people can cheerfully walk together with [nearly] no problems.” But neighborhood sentiment around this one-of-a-kind historic event remains strongly ambivalent. While some neighbors host parties, play music, and join in the festivities, others are put off by the nuisance caused by those whose pursuit of a good time leaves them stumbling around our neighborhood well into Sunday afternoon.

Miles of fencing, increased enforcement of open container laws, the closure of Alamo Square Park, and the elimination of the tradition of floats have resulted in a markedly smaller and tamer event over the past several years. From a peak of over 100,000 participants in 1986, the Bay to Breakers race has shriveled to less than half that size. And yet, neighbors have continued to suffer the impacts in recent years. So what happened?

When the previous owners of Bay to Breakers, AEG purchased the race in 2003, they did three things that ensured problems for NOPA residents:

1. Stepped up alcohol enforcement at the park entrance at Stanyan. Those carrying alcohol simply stopped, or turned around rather than continuing into the park.
2. Eliminated the “Footstock” festival in the Polo Fields - taking away a large, mid-park destination where people could chill out and disperse from throughout the day.
3. Reduced the number of portapotties to be consistent with a traditional race, not a festival. Revelers - predictably - found other ways to attend to their needs, often it seems on neighbors’ doorsteps.

However, a new owner, the Wasserman Group, who purchased the race from AEG in 2013, has made substantial improvements, most notably increasing portapotties and returning music acts to Golden Gate Park. “It’s been fantastic!” according to Chris Holmes, Wasserman Director of Marketing. Registration has grown from over 25,000 in 2013 to more than 40,000 in 2015, and it increased





PHOTOS: Lisa Eastlack

again in 2016. With a standard registration price of \$65, the revenue from the event can be estimated to be near \$3 million, roughly double the 2013 revenues, and this does not count additional income from Zappos' sponsorship. But the financial boon is not limited to Wasserman; Holmes also reports local businesses along the route call it the "best day of the year."

The improvements represent important strides to restore this one-of-a-kind San Francisco day where top flight athleticism mixes comfortably with abject silliness. Bay to Breakers may once again be a day where our neighborhood enthusiastically joins in on the fun, instead of guarding our stoops, with runners, revelers, spectators, and businesses participating in "San Francisco's best day." Maybe someday, they'll even bring back the floats.

---

Jason Cauthen is a San Francisco native, has participated in the Bay to Breakers in each of the last four decades, and now loves sharing the event with his young children.

# Brenda's

MEAT & THREE

## SO WHAT'S A MEAT & THREE?

A southern culinary tradition, a meat & three is a meal with one meat entrée and three side dishes, which the diner chooses from a list of options.

We pay homage to this tradition with our meat & three style diner.

Open everyday except Tuesday, 8am – 10pm  
 Breakfast • Lunch • Dinner • Weekend Brunch  
 919 Divisadero St 415.926.8657  
 brendasmeatandthree.com

## OUT AND ABOUT

# Souvla Now Serving Greek Specialties on Divis

Souvla, the popular Greek eatery based in Hayes Valley, has opened up a second location on Divisadero. The former Herbivore spot at 531 Divisadero St. has been transformed into a light and airy space, with plentiful indoor and outdoor seating.



PHOTOS: souvlasf.com

## GOT A CASE OF THE MONDAYS?

Wine Kitchen at 507 Divisadero could cure your blues with 1/2 price bottles of wine on Monday evenings. Afterwards, head across the street to Madrone for Motown on Mondays.

## MAKEOVER ON DIVIS

518 Divisadero got a little facelift and is re-opened as Pamper Now. They offer facial, waxing and nail services and use products made with organic and vegan ingredients.

## KAVA KORNER

Visit McAllister & Divis for community workshops focused on healing and herbalism at the Kava Lounge, 901 Divisadero.

## APARTMENT THERAPY

Our neighborhood is quickly becoming a shopping destination for all your interior needs. Panhandle Home at 501 Broderick offers custom pillows and accessories. Perish Trust at 728 Divisadero frequently brings in new inventory of well worn home goods & local handiwork. Local Craft at 1421 Fulton offers beautiful custom draperies, bedding and linens.

## SAD GOODBYES

San Franpsycho has closed the doors of their Divisadero location. They were a great member of our community and will be missed.

In May, neighbors gathered for a farewell toast in Alamo Square. The Alamo Square Park is closed for the next 9 months while renovations are completed.



# Annual Block Party Fun for All



# Thank you

to all of the neighbors who came out for our annual NOPA Block Party in May! We all enjoyed great food, great music, face painting, spin art, bouncey houses and chalk art on a beautiful day. Many thanks also to our generous donors, Bi-Rite and Central Coffee, who helped to make the Block Party possible. Lastly, thanks also to Parkside Market, SF Department of Elections, SF NOW, Doug Diboll, Clint Womack and the fantastic bands who came to entertain us.



PHOTOS: Kandace Kaylor (kebabs, NOPNA table, firetruck), Brian P. McCarthy (spun art), Lisa Eastlack (bounce house)

# NOPA Celebrates 10th Anniversary



NOPA, a San Francisco gathering place, is an ingredient-focused Californian eats and creative cocktails restaurant.

Weekdays : 5pm -1am  
Weekends : 11am-1am  
560 Divisadero @ Hayes  
info@nopasf.com | 415.864.8643

NOPA Restaurant on Divisadero recently celebrated its Ten Year Anniversary. NOPNA (North of Panhandle Neighborhood Association) had a chance to interview one of NOPA's owners, Chef Laurence Jossel, to learn more about the restaurant and achieving this milestone.

## How did you come up with the name NOPA?

We wanted to represent the neighborhood. We had always wanted to open a neighborhood restaurant. A friend started doing research on this neighborhood, and learned that there was a neighborhood association, North of Panhandle Neighborhood Association, or "NOPNA." We didn't want to cause confusion with that.



We liked the simplicity of "NoPa" since it stands for "North of the Panhandle," so we went with that.

## What are the ingredients that make NOPA successful?

We are honest and we feel we represent the area well. We have a great deal of respect for providing excellent service. NOPA is a community gathering space and we always hire great people to serve our clientele.

## In the early days, what did you learn about operating a restaurant in NoPa?

We ran out of food early on, so we learned how not to do that! Our philosophy is that it is always best to push forward. We are always thinking about how we can improve our service, and offer even better food and drinks.

## How did NOPA celebrate its recent Ten Year Anniversary?

It was actually a hard day; it was a bit overwhelming. We are not used to being in the limelight. But it was a lot of fun! We had a lot of people come in town for the celebration — many of them had helped us open the restaurant in 2006. It was great to reconnect with many old friends.

## What makes the NOPA burger so good?

I have always liked the burger. We make buns in a house grill over wood.

It's healthy and delicious. Everything is made in-house. There is a great deal of amount of work that goes into it. It's an honorable sandwich.

## What's in the future for NOPA?

We still have a long way to go. We keep trying to get better and make our operations sustainable. We want to keep people excited by our food. There have been talks about remodeling, especially with sound; we are trying to make the restaurant an even more comfortable space.

## What's your perspective on the changes to the NoPa/Western Addition neighborhood over the past ten years?

The neighborhood has definitely changed — San Francisco has changed! There is a lot more focus on tech now. It's harder to find cooks because it's expensive to live in the city. I'm happy to have a business in San Francisco. It is cooler and also safer in some respects. There are some pretty cool businesses that have opened up in the neighborhood over the last few years. And there are some up and coming restaurants, I'm excited to see!

## What is NOPA's relationship with NOPNA?

We do public service and we celebrate our success by giving back. We understand the community — it is a big deal to us. NOPNA was kind to us in the early days. We said 'you can help us or hurt us; we want to be a part of this neighborhood,' and all we got was positivity.

---

Charles Dupigny is vice president of the NOPNA board.

## 901 Divisadero

(at McAllister)

**NOW SERVING  
LUNCH &  
DINNER**

*Open 6 am  
to 9:30 pm  
every day*



Authentic Ethiopian and Eritrean dishes, prepared with natural ingredients and served with special "injera" bread

Meat and vegetarian options • Beer and wine

Cafe specialties (pastries, sandwiches, and "one-cup-at-a time" coffee) available all day

Great selection of Ethiopian coffee blends for sale



*Wheelchair accessible • No Reservations required*

## Calendar of Events

### **Divisadero Farmers Market**

Sundays, 10 a.m. – 2 p.m.  
Grove@Divisadero

### **SFPD Park Station Community Meeting**

Tuesday, September 13, 6 p.m.  
Park Station, 1899 Waller St.

### **SFPD Northern Station Community Meeting**

Thursday, September 8, 6 p.m.  
Northern Station, 1125 Fillmore St.

### **Panhandle Park Community Work Day**

Saturday, September 10, 9–11 a.m.  
Meet near the playground (Masonic and Fell)

### **NOPNA General Meeting**

Thursday, September 15, 7:00 p.m.  
Oasis Cafe, 901 Divisadero St.

## San Francisco Addict and Top 1% Realtor

We build wealth & create options by helping our clients make great decisions.

[Living415.com/415-269-4663](http://Living415.com/415-269-4663)

Jennifer  
Rosdail

REAL ESTATE  
HOMES | HOODS | INVESTMENTS

**kw**

LUXURY HOMES  
INTERNATIONAL

KELLER WILLIAMS® REALTY

# MOLLIE POE

## Top Producer & NOPA Specialist



As a long-term resident of North Panhandle, a Mom with kids in local schools, and a strong supporter and advocate of everything NOPA (including the neighborhood association as a business member and avid sponsor), I regularly represent Buyers and Sellers within our wonderful neighborhood.

Please visit my website for further information on past sales and property presentations, or call me directly with any Real Estate inquiries.

If you are thinking of selling, I'd love to help with a market analysis of your property. Low inventory continues to drive our market and you maybe very surprised to find the 'hidden equity' in your home, given these market conditions. I have good insight into NOPA's Buyer pool, and I frequently have access to pocket listings and a proven strategy to get you the best results within NOPA's borders or other neighborhoods in our 7x7.

## MY RECENT NOPA SALES

### COMING SOON

#### 1719-1721-1723 GOLDEN GATE AVE

- 3 Individual TIC Units
- Recently updated Craftsman Style building
- Spacious floor plans
- Beautiful details
- Landscaped shared yard
- Parking is tandem for 2 cars

#### LOWER UNIT - 1719 \$799,000

2 Bedrooms, 1 Bath, 0 Parking

#### MIDDLE UNIT - 1721 \$899,000

2 Bedrooms, 1 Bath, 1 Car Parking

#### UPPER UNIT - 1723 \$975,000

2 Bedrooms, 1 Bath, 1 Car Parking

PHOTOS SOON AT

[WWW.GOLDENGATE3UNITS.COM](http://WWW.GOLDENGATE3UNITS.COM)

### IN CONTRACT

#### 1667A GROVE STREET

- Lower Level Unit in 3 Unit Building
- 1 Bedroom 1 Bath
- Light filled Kitchen walks out to landscaped yard

LISTED \$769,000

REPRESENTED SELLER

[WWW.1667A-GROVE.COM](http://WWW.1667A-GROVE.COM)



### IN CONTRACT

#### 1612 FULTON STREET

- Light Filled & Updated Condo
- Hardwood Floors
- Edwardian Details
- 2 Bedrooms 1 Bath
- Shared Yard

LISTED \$995,000

REPRESENTED BUYER



MOLLIE POE | NOPA SALES SPECIALIST | TOP 1% SFAR 2015

20 YEAR NOPA RESIDENT | NOPNA BUSINESS MEMBER

PACIFIC UNION INT'L · CHRISTIE'S REAL ESTATE

1699 VAN NESS AVENUE, SAN FRANCISCO, CA 94109

415.902.2447 | [MOLLIE@MOLLIEPOE.COM](mailto:MOLLIE@MOLLIEPOE.COM) | [WWW.MOLLIEPOE.COM](http://WWW.MOLLIEPOE.COM)